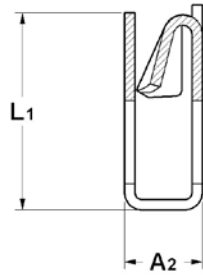
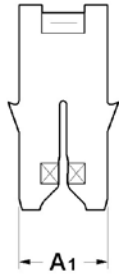


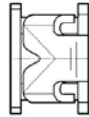
TERMINALI INAR-RS-MATE SAFETY	INAR-RS-MATE TERMINALS SAFETY	INAR-RS-MATE SAFETY	COSSES INAR-RS-MATE SAFETY	4.4
TERMINALI INAR-RS-MATE LEAF SPRING 1	INAR-RS-MATE TERMINALS LEAF SPRING 1	INAR-RS-MATE LEAF SPRING 1	COSSES INAR-RS-MATE LEAF SPRING 1	4,6
TERMINALI INAR-RS-MATE LEAF SPRING 2	INAR-RS-MATE TERMINALS LEAF SPRING 2	INAR-RS-MATE LEAF SPRING 2	COSSES INAR-RS-MATE LEAF SPRING 2	4.8



**TERMINALI "INAR-RS-MATE"**  
SAFETY

**"INAR-RS-MATE" TERMINALS**  
SAFETY

**"INAR-RS-MATE"**  
SAFETY



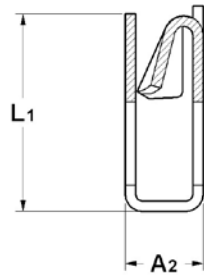
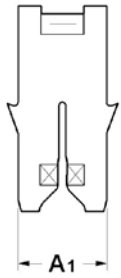
**COSSES "INAR-RS-MATE"**  
SAFETY

Tab. n° 1 - a

Filo Smaltato Magnet wire Kupfer-Lackdraht Fil émaillé	Spessore maschio Tab thick Steckerdicke Epaisseur languette	Spessore materiale Mat thick Materialdicke Epaisseur matière	DX right rechts droit	SX left links gauche	A 1	A 2	L 1	Codice Nr. P. N. Art. Nr. Code Nr.	Materiale Material Werkstoff Matiere	Confezione Packing Verpackung Conditionnement	Nota Note Anmerk. Note
0,18 ÷ 0,23	0,4 - 0,5	0,25		X	3,42	3	7,6	0011650001	Cu Zn	10000x6	[aa]
								0011650101	Cu Zn PRE-TIN		
								0011650271	Cu Zn gal Sn		
								1411650001	Cu Ni SiMg		
								1411650101	Cu Ni Si Mg PRE-TIN		
1411650271	Cu Ni Si Mg gal Sn										
0,18 ÷ 0,23	0,4 - 0,5	0,25	X		3,42	3	7,6	0011655001	Cu Zn	10000x6	[aa]
								0011655101	Cu Zn PRE-TIN		
								0011655271	Cu Zn gal Sn		
								1411655001	Cu Ni Si Mg		
								1411655101	Cu Ni Si Mg PRE-TIN		
1411655271	Cu Ni Si Mg gal Sn										
0,25 ÷ 0,36	0,4 - 0,5	0,32		X	3,42	3	7,6	0011651001	Cu Zn	10000x6	[aa]
								0011651101	Cu Zn PRE-TIN		
								0011651271	Cu Zn gal Sn		
								1411651001	Cu Ni Si Mg		
								1411651101	Cu Ni Si Mg PRE-TIN		
1411651271	Cu Ni Si Mg gal Sn										
0,25 ÷ 0,36	0,4 - 0,5	0,32	X		3,42	3	7,6	0011656001	Cu Zn	10000x6	[aa]
								0011656101	Cu Zn PRE-TIN		
								0011656271	Cu Zn gal Sn		
								1411656001	Cu Ni Si Mg		
								1411656101	Cu Ni Si Mg PRE-TIN		
1411656271	Cu Ni Si Mg gal Sn										
0,36 ÷ 0,57	0,4 - 0,5	0,40		X	3,42	3	7,6	0011652001	Cu Zn	10000x6	[aa]
								0011652101	Cu Zn PRE-TIN		
								0011652271	Cu Zn gal Sn		
								1411652001	Cu Ni Si Mg		
								1411652101	Cu Ni Si Mg PRE-TIN		
1411652271	Cu Ni Si Mg gal Sn										
0,36 ÷ 0,57	0,4 - 0,5	0,40	X		3,42	3	7,6	0011657001	Cu Zn	10000x6	[aa]
								0011657101	Cu Zn PRE-TIN		
								0011657271	Cu Zn gal Sn		
								1411657001	Cu Ni Si Mg		
								1411657101	Cu Ni Si Mg PRE-TIN		
1411657271	Cu Ni Si Mg gal Sn										

[aa]: Cavi singoli e doppi possono essere cablati se tipo e diametro sono uguali./Single and double wires may be terminated if diameter and type are equal.

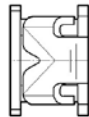
Segue - Follow - Folge - Tournez >



**TERMINALI "INAR-RS-MATE"**  
SAFETY

**"INAR-RS-MATE" TERMINALS**  
SAFETY

**"INAR-RS-MATE"**  
SAFETY



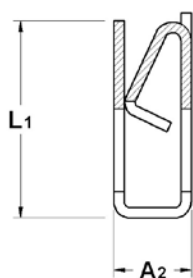
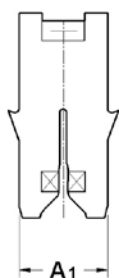
**COSSES "INAR-RS-MATE"**  
SAFETY

Tab. n° 1 - b

< Segue - Follow - Folge - Tournez

Filo Smaltato Magnet wire Kupfer-Lackdraht Fil émaillé	Spessore maschio Tab thick Steckerdicke Epaisseur languette	Spessore materiale Mat thick Materialdicke Epaisseur matière	DX right rechts droit	SX left links gauche	A1	A2	L1	Codice Nr. P. N. Art. Nr. Code Nr.	Materiale Material Werkstoff Matiere	Confezione Packing Verpackung Conditionnement	Nota Note Anmerk. Note
0,64 ÷ 0,81	0,4 - 0,5	0,40		X	3,42	3	7,6	0011653001	Cu Zn	10000x6	
								0011653101	Cu Zn PRE-TIN		
								0011653271	Cu Zn gal Sn		
								1411653001	Cu Ni Si Mg		
								1411653101	Cu Ni Si Mg PRE-TIN		
								1411653271	Cu Ni Si Mg gal Sn		
0,64 ÷ 0,81	0,4 - 0,5	0,40	X		3,42	3	7,6	0011658001	Cu Zn	10000x6	
								0011658101	Cu Zn PRE-TIN		
								0011658271	Cu Zn gal Sn		
								1411658001	Cu Ni Si Mg		
								1411658101	Cu Ni Si Mg PRE-TIN		
								1411658271	Cu Ni Si Mg gal Sn		
0,64 ÷ 0,81	0,4 - 0,5	0,40		X	3,42	3	7,6	0011648001	Cu Zn	10000x6	[aa]
								0011648101	Cu Zn PRE-TIN		
								0011648271	Cu Zn gal Sn		
								1411648001	Cu Ni Si Mg		
								1411648101	Cu Ni Si Mg PRE-TIN		
								1411648271	Cu Ni Si Mg gal Sn		
0,64 ÷ 0,81	0,4 - 0,5	0,40	X		3,42	3	7,6	0011649001	Cu Zn	10000x6	[aa]
								0011649101	Cu Zn PRE-TIN		
								0011649271	Cu Zn gal Sn		
								1411649001	Cu Ni Si Mg		
								1411649101	Cu Ni Si Mg PRE-TIN		
								1411649271	Cu Ni Si Mg gal Sn		
0,91 ÷ 1,15	0,4 - 0,5	0,40		X	3,42	3	7,6	0011654001	Cu Zn	10000x6	
								0011654101	Cu Zn PRE-TIN		
								0011654271	Cu Zn gal Sn		
								1411654001	Cu Ni Si Mg		
								1411654101	Cu Ni Si Mg PRE-TIN		
								1411654271	Cu Ni Si Mg gal Sn		
0,91 ÷ 1,15	0,4 - 0,5	0,40	X		3,42	3	7,6	0011659001	Cu Zn	10000x6	
								0011659101	Cu Zn PRE-TIN		
								0011659271	Cu Zn gal Sn		
								1411659001	Cu Ni Si Mg		
								1411659101	Cu Ni Si Mg PRE-TIN		
								1411659271	Cu Ni Si Mg gal Sn		

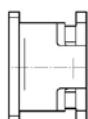
[aa]: Cavi singoli e doppi possono essere cablati se tipo e diametro sono uguali./Single and double wires may be terminated if diameter and type are equal.



**TERMINALI "INAR-RS-MATE"**  
LEAF SPRING 1

**"INAR-RS-MATE" TERMINALS**  
LEAF SPRING 1

**"INAR-RS-MATE"**  
LEAF SPRING 1



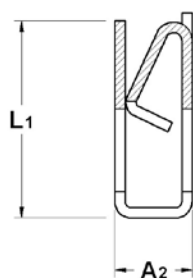
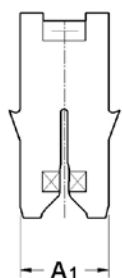
**COSESSE "INAR-RS-MATE"**  
LEAF SPRING 1

Tab. n° 2 - a

Filo Smaltato Magnet wire Kupfer-Lackdraht Fil émaillé	Spessore maschio Tab thick Steckerdicke Epaisseur languette	Spessore materiale Mat thick Materialdicke Epaisseur matière	DX right rechts droit	SX left links gauche	A 1	A 2	L 1	Codice Nr. P. N. Art. Nr. Code Nr.	Materiale Material Werkstoff Matiere	Confezione Packing Verpackung Conditionnement	Nota Note Anmerk. Note
0,18 ÷ 0,23	0,4 - 0,5	0,25	X		3,42	3	7,6	0011637001	Cu Zn	10000x6	[aa]
								0011637101	Cu Zn PRE-TIN		
								0011637271	Cu Zn gal Sn		
								1411637001	Cu Ni Si Mg		
								1411637101	Cu Ni Si Mg PRE-TIN		
								1411637271	Cu Ni Si Mg gal Sn		
0,18 ÷ 0,23	0,4 - 0,5	0,25		X	3,42	3	7,6	0011638001	Cu Zn	10000x6	[aa]
								0011638101	Cu Zn PRE-TIN		
								0011638271	Cu Zn gal Sn		
								1411638001	Cu Ni Si Mg		
								1411638101	Cu Ni Si Mg PRE-TIN		
								1411638271	Cu Ni Si Mg gal Sn		
0,25 ÷ 0,36	0,4 - 0,5	0,32	X		3,42	3	7,6	0011642001	Cu Zn	10000x6	[aa]
								0011642101	Cu Zn PRE-TIN		
								0011642271	Cu Zn gal Sn		
								1411642001	Cu Ni Si Mg		
								1411642101	Cu Ni Si Mg PRE-TIN		
								1411642271	Cu Ni Si Mg gal Sn		
0,25 ÷ 0,36	0,4 - 0,5	0,32		X	3,42	3	7,6	0011639001	Cu Zn	10000x6	[aa]
								0011639101	Cu Zn PRE-TIN		
								0011639271	Cu Zn gal Sn		
								1411639001	Cu Ni Si Mg		
								1411639101	Cu Ni Si Mg PRE-TIN		
								1411639271	Cu Ni Si Mg gal Sn		
0,36 ÷ 0,57	0,4 - 0,5	0,40	X		3,42	3	7,6	0011643001	Cu Zn	10000x6	[aa]
								0011643101	Cu Zn PRE-TIN		
								0011643271	Cu Zn gal Sn		
								1411643001	Cu Ni Si Mg		
								1411643101	Cu Ni Si Mg PRE-TIN		
								1411643271	Cu Ni Si Mg gal Sn		
0,36 ÷ 0,57	0,4 - 0,5	0,40		X	3,42	3	7,6	0011640001	Cu Zn	10000x6	[aa]
								0011640101	Cu Zn PRE-TIN		
								0011640271	Cu Zn gal Sn		
								1411640001	Cu Ni Si Mg		
								1411640101	Cu Ni Si Mg PRE-TIN		
								1411640271	Cu Ni Si Mg gal Sn		

[aa]: Cavi singoli e doppi possono essere cablati se tipo e diametro sono uguali./Single and double wires may be terminated if diameter and type are equal.

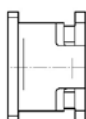
Segue - Follow - Folge - Tournez >



**TERMINALI "INAR-RS-MATE"**  
LEAF SPRING 1

**"INAR-RS-MATE" TERMINALS**  
LEAF SPRING 1

**"INAR-RS-MATE"**  
LEAF SPRING 1



**COSSES "INAR-RS-MATE"**  
LEAF SPRING 1

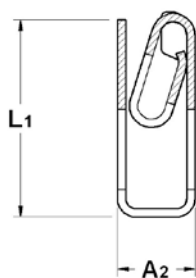
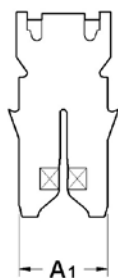
Tab. n° 2 - b

< Segue - Follow - Folge - Tournez

Filo Smaltato Magnet wire Kupfer-Lackdraht Fil émaillé	Spessore maschio Tab thick Steckerdicke Epaisseur languette	Spessore materiale Mat thick Materialdicke Epaisseur matière	DX right rechts droit	SX left links gauche	A 1	A 2	L 1	Codice Nr. P. N. Art. Nr. Code Nr.	Materiale Material Werkstoff Matiere	Confezione Packing Verpackung Conditionnement	Nota Note Anmerk. Note
0,64 ÷ 0,81	0,4 - 0,5	0,40	X		3,42	3	7,6	0011644001	Cu Zn	10000x6	
								0011644101	Cu Zn PRE-TIN		
								0011644271	Cu Zn gal Sn		
								1411644001	Cu Ni Si Mg		
								1411644101	Cu Ni Si Mg PRE-TIN		
								1411644271	Cu Ni Si Mg gal Sn		
0,64 ÷ 0,81	0,4 - 0,5	0,40		X	3,42	3	7,6	0011641001	Cu Zn	10000x6	
								0011641101	Cu Zn PRE-TIN		
								0011641271	Cu Zn gal Sn		
								1411641001	Cu Ni Si Mg		
								1411641101	Cu Ni Si Mg PRE-TIN		
								1311641271	Cu Ni Si Mg gal Sn		
0,91 ÷ 1,15	0,4 - 0,5	0,40	X		3,42	3	7,6	0011646001	Cu Zn	10000x6	[ab]
								0011646101	Cu Zn PRE-TIN		
								0011646271	Cu Zn gal Sn		
								1411646001	Cu Ni Si		
								1411646101	Cu Ni Si Mg PRE-TIN		
								1411646271	Cu Ni Si Mg gal Sn		
0,91 ÷ 1,15	0,4 - 0,5	0,40		X	3,42	3	7,6	0011647001	Cu Zn	10000x6	[ab]
								0011647101	Cu Zn PRE-TIN		
								0011647271	Cu Zn gal Sn		
								1411647001	Cu Ni Si		
								1411647101	Cu Ni Si Mg PRE-TIN		
								1411647271	Cu Ni Si Mg gal Sn		

[aa]: Cavi singoli e doppi possono essere cablati se tipo e diametro sono uguali. /Single and double wires may be terminated if diameter and type are equal.

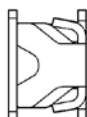
[ab]: Cavi doppi: solo 2 fili ø 0,91. /Double wires: only 2 wires ø 0,91.



**TERMINALI "INAR-RS-MATE"**  
LEAF SPRING 2

**"INAR-RS-MATE" TERMINALS**  
LEAF SPRING 2

**"INAR-RS-MATE"**  
LEAF SPRING 2



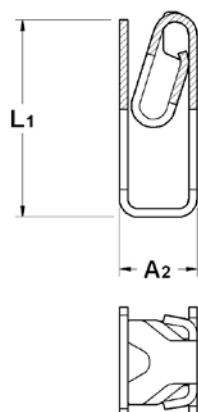
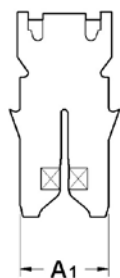
**COSESSES "INAR-RS-MATE"**  
LEAF SPRING 2

Tab. n° 3 - a

Filo Smaltato Magnet wire Kupfer-Lackdraht Fil émaillé	Spessore maschio Tab thick Steckerdicke Epaisseur languette	Spessore materiale Mat thick Materialdicke Epaisseur matière	DX right rechts droit	SX left links gauche	A 1	A 2	L 1	Codice Nr. P. N. Art. Nr. Code Nr.	Materiale Material Werkstoff Matiere	Confezione Packing Verpackung Conditionnement	Nota Note Anmerk. Note
0,18 ÷ 0,23	0,4 - 0,5	0,32		X	3,42	3	7,6	0011665001	Cu Zn	10000x6	[aa]
								0011665101	Cu Zn PRE-TIN		
								0011665271	Cu Zn gal Sn		
								1411665001	Cu Ni Si Mg		
								1411665101	Cu Ni Si Mg PRE-TIN		
								1411665271	Cu Ni Si Mg gal Sn		
0,18 ÷ 0,23	0,4 - 0,5	0,32	X		3,42	3	7,6	0011670001	Cu Zn	10000x6	[aa]
								0011670101	Cu Zn PRE-TIN		
								0011670271	Cu Zn gal Sn		
								1411670001	Cu Ni Si Mg		
								1411670101	Cu Ni Si Mg PRE-TIN		
								1411670271	Cu Ni Si Mg gal Sn		
0,25 ÷ 0,36	0,4 - 0,5	0,32		X	3,42	3	7,6	0011666001	Cu Zn	10000x6	[aa]
								0011666101	Cu Zn PRE-TIN		
								0011666271	Cu Zn gal Sn		
								1411666001	Cu Ni Si Mg		
								1411666101	Cu Ni Si Mg PRE-TIN		
								1411666271	Cu Ni Si Mg gal Sn		
0,25 ÷ 0,36	0,4 - 0,5	0,32	X		3,42	3	7,6	0011671001	Cu Zn	10000x6	[aa]
								0011671101	Cu Zn PRE-TIN		
								0011671271	Cu Zn gal Sn		
								1411671001	Cu Ni Si Mg		
								1411671101	Cu Ni Si Mg PRE-TIN		
								1411671271	Cu Ni Si Mg gal Sn		
0,36 ÷ 0,57	0,4 - 0,5	0,32		X	3,42	3	7,6	0011667001	Cu Zn	10000x6	[aa]
								0011667101	Cu Zn PRE-TIN		
								0011667271	Cu Zn gal Sn		
								1411667001	Cu Ni Si Mg		
								1411667101	Cu Ni Si Mg PRE-TIN		
								1411667271	Cu Ni Si Mg gal Sn		

[aa]: Cavi singoli e doppi possono essere cablati se tipo e diametro sono uguali./Single and double wires may be terminated if diameter and type are equal.

Segue - Follow - Folge - Tournez >



**TERMINALI "INAR-RS-MATE"**  
LEAF SPRING 2

**"INAR-RS-MATE" TERMINALS**  
LEAF SPRING 2

**"INAR-RS-MATE"**  
LEAF SPRING 2

**COSSES "INAR-RS-MATE"**  
LEAF SPRING 2

Tab. n° 3 - b

< Segue - Follow - Folge - Tournez

Filo Smaltato Magnet wire Kupfer-Lackdraht Fil émaillé	Spessore maschio Tab thick Steckerdicke Epaisseur languette	Spessore materiale Mat thick Materialdicke Epaisseur matière	DX right rechts droit	SX left links gauche	A 1	A 2	L 1	Codice Nr. P. N. Art. Nr. Code Nr.	Materiale Material Werkstoff Matiere	Confezione Packing Verpackung Conditionnement	Nota Note Anmerk. Note
0,36 ÷ 0,57	0,4 - 0,5	0,32	X		3,42	3	7,6	0011672001	Cu Zn	10000x6	[aa]
								0011672101	Cu Zn PRE-TIN		
								0011672271	Cu Zn gal Sn		
								1411672001	Cu Ni Si Mg		
								1411672101	Cu Ni Si Mg PRE-TIN		
								1411672271	Cu Ni Si Mg gal Sn		
0,64 ÷ 0,81	0,4 - 0,5	0,32		X	3,42	3	7,6	0011668001	Cu Zn	10000x6	
								0011668101	Cu Zn PRE-TIN		
								0011668271	Cu Zn gal Sn		
								1411668001	Cu Ni Si Mg		
								1411668101	Cu Ni Si Mg PRE-TIN		
								1411668271	Cu Ni Si Mg gal Sn		
0,64 ÷ 0,81	0,4 - 0,5	0,32	X		3,42	3	7,6	0011673001	Cu Zn	10000x6	
								0011673101	Cu Zn PRE-TIN		
								0011673271	Cu Zn gal Sn		
								1411673001	Cu Ni Si Mg		
								1411673101	Cu Ni Si Mg PRE-TIN		
								1411673271	Cu Ni Si Mg gal Sn		
0,85 ÷ 1,12	0,4 - 0,5	0,32		X	3,42	3	7,6	0011669001	Cu Zn	10000x6	
								0011669101	Cu Zn PRE-TIN		
								0011669271	Cu Zn gal Sn		
								1411669001	Cu Ni Si Mg		
								1411669101	Cu Ni Si Mg PRE-TIN		
								1411669271	Cu Ni Si Mg gal Sn		
0,85 ÷ 1,12	0,4 - 0,5	0,32	X		3,42	3	7,6	0011675001	Cu Zn	10000x6	
								0011675101	Cu Zn PRE-TIN		
								0011675271	Cu Zn gal Sn		
								1411675001	Cu Ni Si Mg		
								1411675101	Cu Ni Si Mg PRE-TIN		
								1411675271	Cu Ni Si Mg gal Sn		

[aa]: Cavi singoli e doppi possono essere cablati se tipo e diametro sono uguali./Single and double wires may be terminated if diameter and type are equal.